



SLHS STUDENT VOICE



THE OFFICIAL NEWSLETTER OF SPEECH, LANGUAGE AND HEARING SCIENCES



TABLE OF CONTENTS:

- ANNOUNCEMENTS--1 & 2
- ON THE GROUND REPORT--3 & 4
- FAQ--5
- STAFF SPOTLIGHT--6
- SENIOR PLANS--7
- WHAT I WISH I KNEW--8

MARK YOUR CALENDARS

- Senior Honors Poster session on April 29th from 9-11 a.m. at the RAHC (Regional Academic Health Center) room 2032
- IU Spring Undergraduate Commencement on Saturday, May 7, 2022 starting at 10 a.m. at Memorial Stadium
- Commencement ceremony for the SLHS Department on May 7th starting at 1:00 p.m. at the Virgil T. DeVault Alumni Center
 - Come early for light refreshments at 12:30 p.m.

STUDENT CONTRIBUTORS

DeAvianna Abrons

Liz Benvenuto

Abigail Bostrack

Hannah Brownd

Shelemiah Crockett

Elizabeth Drobny

Rachel Ostrowski

Lily Peters

Lauren Ross

Jordan Seiler

Kristen Simons

Kierra Wiles

ANNOUNCEMENTS

PHI BETA KAPPA AWARDEES

Three SLHS students have recently been elected to Phi Beta Kappa, the oldest and most prestigious academic honors society in the country. Only a select number of students at member institutions are elected annually. The IU Chapter of PBK recognizes the following students for the excellence and breadth of their undergraduate scholarly accomplishments:

- Liz Benvenuto
- Reeya Patel
- Madison Street



The **PHI BETA KAPPA** *Society*
THE NATION'S OLDEST ACADEMIC HONOR SOCIETY
— Founded December 5, 1776 —



ON THE GROUND REPORT

STUDENT CONTRIBUTORS: SHELEMIAM CROCKETT AND DEAVIANNA ABRONS

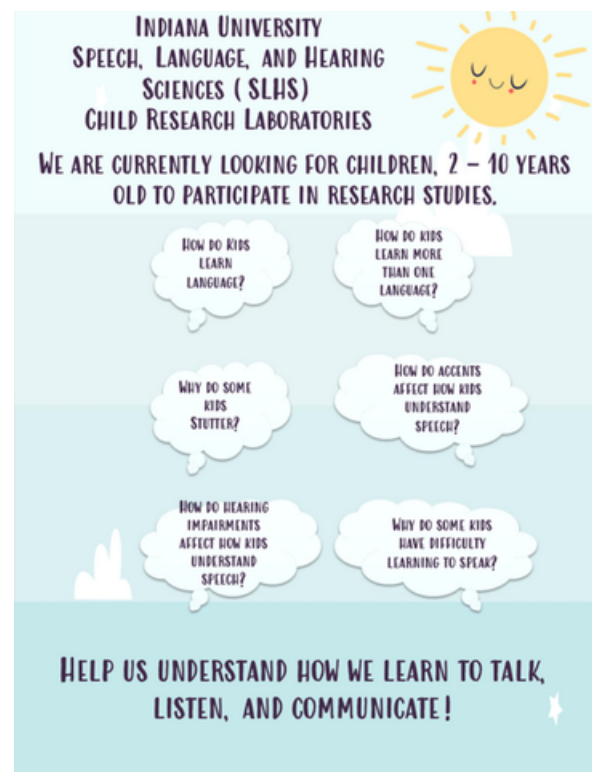
RECRUITMENT EVENTS

Labs of the Speech, Language and Hearing Sciences Department participate in recruitment events in order to reach prospective participants for research studies. Some populations, like children, can be more difficult to reach. Therefore, department labs attend IU or community-held events in search of these subjects. Annually, lab members typically attend two main local events: the Lotus Blossoms World Bazaar and the Children's Expo. Both events are geared towards entertaining kids. A junior volunteer from the Speech Perception lab attended the Lotus Blossom event on April 2nd and reported that it was like a multicultural fest with different goodies, including snacks, sticker prizes, and activities like bongo playing and Chinese yoyoing. SLHS labs from IU provided language-related exercises for the kids. Children signed their names in ASL, matched Spanish words with pictures, and translated short phonemic sentences into standard English. A senior volunteer from the Speech Perception lab and a junior from the LeMur lab worked alongside each other at the Children's Expo on April 9th. They presented children with engaging activities that exposed them to sign language and Spanish. As some volunteers kept the kids busy, others collected information from interested parents to be contacted in the future for SLHS department studies. With IRB approval, the SLHS department keeps a shared database with the consent-to-contact information of prospective participants that can be accessed by different labs.

Volunteering at recruitment events not only supports the department, but also provides a great experience to engage with members of the community. One volunteer reported how she really enjoyed the event because she hadn't had many experiences with kids during her time at IU due to COVID-19. She also said that it was nice to see kids being exposed to different languages at a younger

age and was pleasantly surprised at how eager parents were to put down their contact information. Others really emphasized how they enjoyed interacting with the community.

"...seeing all these children wanting to get involved with math and science and participate in these community events was kind of like a breath of fresh air," described one volunteer. He talked about how the small interactions with children really made his day and overall, he had a rewarding experience. "If you're on the fence about volunteering, go for it. You know, it's a really beneficial experience". Events like the Lotus Blossoms World Bazaar and Children's Expo truly help to further research within the field by providing SLHS labs with future subjects. If you are a part of a lab in the department, definitely consider participating in recruitment events when presented with the opportunity!



SLHS Recruitment Flyer

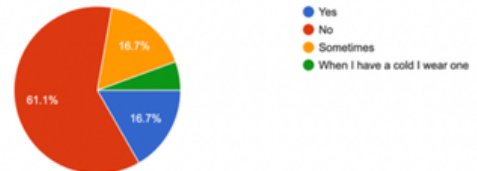
ON THE GROUND REPORT

STUDENT CONTRIBUTORS: SHELEMIAM CROCKETT AND DEAVIANNA ABRONS

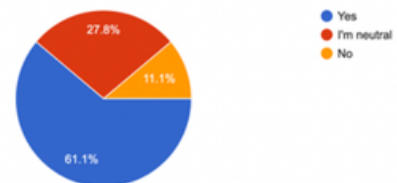
STUDENTS' THOUGHTS ON IU'S NEW MASK MANDATE

On March 4th, IU lifted the mandate so that it was no longer required to wear a mask on campus. Recently, the SLHS Student Advisory Board sent a survey out to undergraduates in the department to gauge their thoughts on the new campus-wide shift in the masking policy. According to the survey results, of those who sometimes wear a mask, their decision to do so is often impacted by whether or not they personally feel sick, whether other people in their environment are wearing one, or whether they desire to generally accommodate the recommendations or comfortability of the people around them. Of those who still wear their masks, two individuals described how they'd stop wearing one once Covid-19 cases became less prevalent. When asked about any additional opinions or comments, one individual expressed their confusion as to why the mask mandate was lifted before spring break. Another mentioned how they believe that it should be the new norm to wear a mask when feeling sick, even if it's just with a cold. If you're interested in learning more about student opinions regarding the new policy, check out the rest of the survey results to the right!

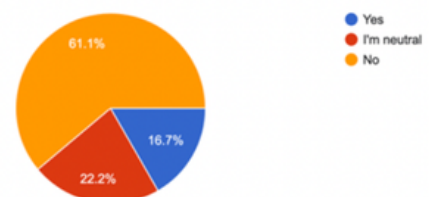
Do you still wear a mask to in-person classes?
18 responses



Are you happy about the fact that mask wearing is now optional on IU's campus?
18 responses



Do you think mask wearing should still be mandatory on IU's campus?
18 responses



In regard to Covid-19, do you feel safe on campus now that mask wearing is optional?
18 responses



FREQUENTLY ASKED QUESTIONS

STUDENT CONTRIBUTORS: KIERRA WILES AND ELIZABETH DROBNY

— “ —

HOW CAN STUDENTS STAY INVOLVED OVER THE SUMMER?

— ” —

There are multiple ways students can keep in touch with the SLHS major over the summer. For those staying in Bloomington, one idea is to join a research lab. Two ways to do this are by asking professors if they have any research projects going on or checking out the research tab on the SLHS website and reaching out to the corresponding faculty member. For those located outside of Bloomington, the best idea may be to complete a handful of observation hours. Many K-12 schools are still in session after IU's semester ends, so they can make a great place to complete these hours. Another idea is to get a job with the population you hope to work with one day. This could mean a summer camp for children/individuals with special needs or a nursing home for older individuals. It is great to become familiar with these age groups now in order to have background skills before beginning professionally.

As students begin to approach their senior year, it is important to be aware of the options available in terms of scheduling. There are many alternative options rising seniors may explore, including graduating a semester early or planning to become a part-time student either both semesters or just their final semester of senior year. By engaging in any of these options, if their schedule allows, students can relieve some of their financial burden as becoming a part-time student results in a lower cost than being a full-time student. If students are interested in exploring their options, they should meet with advisor Mia Ranard and see if this is an option based on their degree requirements. If their schedule permits, students should check their financial aid awards and see how they would be affected by becoming a part-time student. To do this, it is recommended that students reach out to scholarship-specific advisors, such as those in 21st Century Scholars, Hudson and Holland, and others, or talk with a financial aid advisor through Student Central in order to check on federal and state awards such as grants and loans. There are many options that students may explore to help alleviate financial burdens and adjust scheduling for their final year in the program.

— “ —

HOW CAN STUDENTS FINANCIALLY PLAN AHEAD FOR SENIOR YEAR ?

— ” —

— “ —

WHAT ARE CERTIFICATE PROGRAMS AT IU?

— ” —

Indiana University offers an abundance of options for students to complete a certificate program. These are programs that allow students to participate in a more intensive program than a minor and can be a great addition to resumes. Certificate programs are similar to minor programs but require additional coursework and often require students to apply, as they are more selective. Some examples of certificates previous SLHS students have pursued are Liberal Arts & Management, Political & Civic Engagement (LAMP), TESOL & Second Language Acquisition, Jewish Studies, and Neuroscience.

For more information and a list of all certificate options go to: <https://bulletin.college.indiana.edu/programs/index.html?page=1&program-type=cert>.

STAFF SPOTLIGHT

STUDENT CONTRIBUTORS: LAUREN ROSS AND KRISTEN SIMONS

MARCIA HUMPHRESS

We had the pleasure of sitting down with Marcia Humphress, the Fiscal Officer and Manager of the Speech, Language and Hearing Department at Indiana University. Marcia has a lot of different duties when it comes to both the department and the Speech and Hearing Clinic. These include scheduling classes, finances, and event planning. One unique event she is planning is the senior graduation ceremony for the soon-to-be 2022 Speech, Language and Hearing Sciences graduates. Marcia has been working for IU since 2004. When asked what the favorite aspect of her job is, she informed us that she loves every little interaction she has with the undergraduate students. Unfortunately, since moving to the new building, she does not have the opportunity to see them as often. She additionally loves working with the PhD students, graduate students, and the staff at IU. Outside of work, her favorite places to eat in Bloomington are Lennie's and Nick's.

Marcia is originally from Greencastle, Indiana. She spent some time living in Massachusetts, where she loved being on the beach in the summers. She also lived in Colorado, where she would take any opportunity she had to ski. She moved back to Indiana in 1994 and began working for a company called Stone Belt. Stone Belt is an agency that serves people with disabilities. This company is very active in the community, employing individuals with disabilities. However, after ten years she said it was "her time to go" as she became employed with IU. At IU, Marcia takes art classes, which is something she is very passionate about. She is currently enrolled in a weaving class. Besides art, Marcia enjoys sailing on Lake Monroe and walking trails in South Haven, Michigan. When asked what advice she would give to students, she says undergraduates should find a good balance between their schoolwork and social life early on.



CLASS OF 2022 GRADUATING SLHS SENIORS: FUTURE PLANS

STUDENT CONTRIBUTOR: LIZ BENVENUTO

We sent out a survey to the SLHS class of 2022 Seniors asking about their plans for next year and those who responded are as follows:

Melanie Albers :

MA SLP at Indiana University

Caitlyn Baker :

MA SLP at Indiana State University

Olivia Barksdale :

“Plans for a gap year and then applying to PA school”

Bailey Barron :

MA SLP at Indiana University

Danielle Bassett :

AuD at Northwestern University

Liz Benvenuto :

MA SLP at Rush University Medical Center

Rachel Bessire :

“I plan to get certified and work as a hearing instrument specialist.”

Claire Callistein :

MA SLP at Rush University Medical Center

Emily Coffman :

MA SLP at Ball State University

Tatum DeVoe :

MA SLP at Baylor University

Caroline Gretencord :

“Taking a gap year to work as a traveling Leadership Consultant for my sorority for a year and then attending DePaul University for SLP in fall 2023 (I deferred my acceptance)!”

Meg Hardesty :

“Unsure at the moment, potentially a gap year, SLP, or another career in academia. I am on waitlists for grad schools at the moment so this decision will be based on those results.”

Emma Harmon :

MA SLP at Saint Mary’s College

Hannah Leshman :

“I plan on taking my gap year to take some more classes, take the GRE, and get shadowing hours. I then plan to apply to graduate school for Occupational Therapy.”

Summer Myers :

AuD at Indiana University

Gabe Pippin :

MA SLP at Ball State

Lauren Ross :

MA SLP at Marquette University

Jamie Roberts :

MA SLP at Rush University Medical Center

Mary Schiff :

MA SLP at Indiana University

Sophia Schwartz :

MA SLP at Saint Mary’s College

Kristen Simons :

AuD at Northwestern University

Karolina Sroka :

MA SLP at Rush University Medical Center

Madison Street :

MA SLP at Indiana University

Mimi Tran :

AuD at Indiana University

WHAT I WISH I KNEW

GRADUATE SCHOOL EDITION

MIMI TRAN

“ Grad school applications actually take up a lot of time as many of you may already know, so **START EARLY**. As soon as you know that you want to go to grad school, start networking with professors, start finding opportunities to get involved with the field, go to workshops for resumes and personal essays, and do as much research as you can on schools that you are interested in . . . Lastly, always quadruple check every item before applying, especially transcripts because those are really tricky and can easily mess up your application! Good luck to everyone who's applying next fall!

”

CAROLINE GRETENCORD

“ Take time to go to your professor's office hours and form relationships with them even if you don't need their help in the class. Finding strong recommendation letters is a tricky thing to figure out your senior year first semester. Also, befriend your classmates because you will most likely be in the same classes all four years and it's relieving to see these same classmates get into the same graduate programs as yourself. Friendly faces in new places!

”

SUMMER HERZOG

“ I never realized how time-consuming applying to graduate school would be! I wish I would've allotted specific times during the week to work on graduate school applications and stuck to those times. Most applications are due January 15th, so I also wish I would've completed my applications before winter break so I didn't have to work on them over break. Something I wish I knew when going into the process is most schools have different requirements for personal statements, so you can't write just a general one. Personal statements took the longest time.

”